



Stamp Flow Study #1

The first staff of music is in treble clef, key of B-flat major (two flats), and 4/4 time. It begins with a whole note chord of B-flat and D-flat. This is followed by a half note chord of B-flat and D-flat, then a half note chord of B-flat and D-flat. The next measure contains a half note chord of B-flat and D-flat, followed by a half note chord of B-flat and D-flat. The final measure of the staff contains a half note chord of B-flat and D-flat, followed by a half note chord of B-flat and D-flat. The staff ends with a double bar line.

7





10



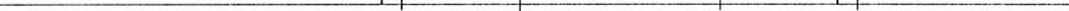
13

16



19 

22



Oboe

Stamp Flow Study #1

Flow Study

4

7

10

Flow Study - Variation #1

13

16

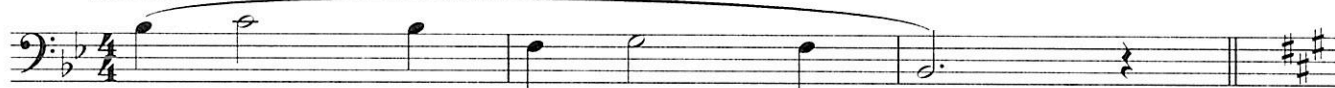
19

22

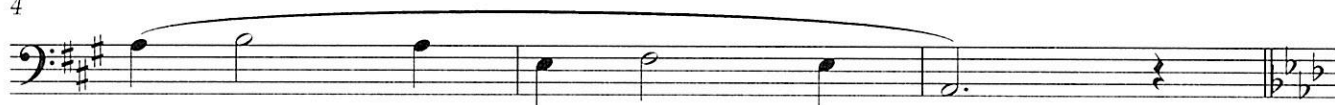
Bassoon

Stamp Flow Study #1

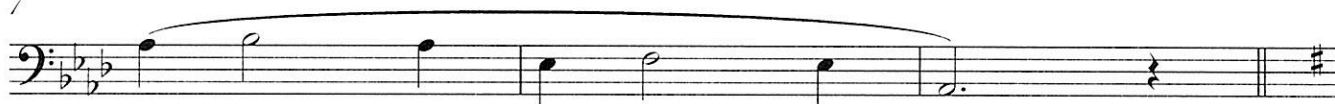
Flow Study



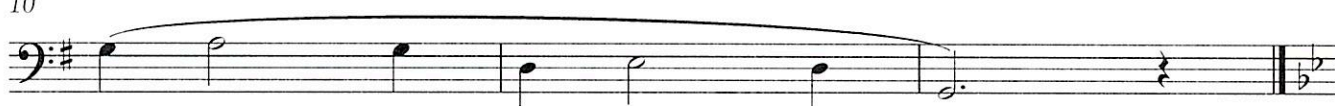
4



7

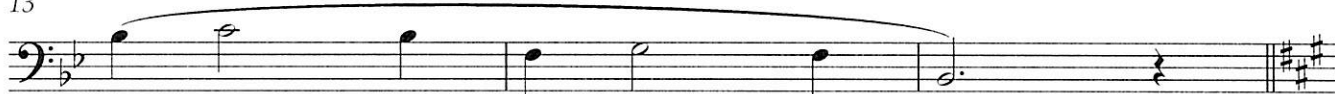


10

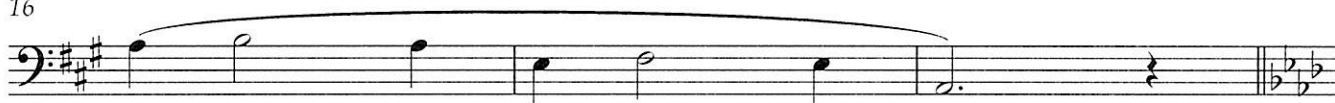


Flow Study - Variation #1

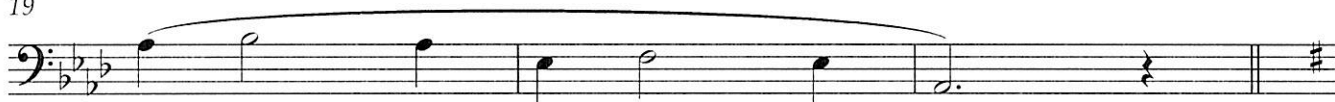
13



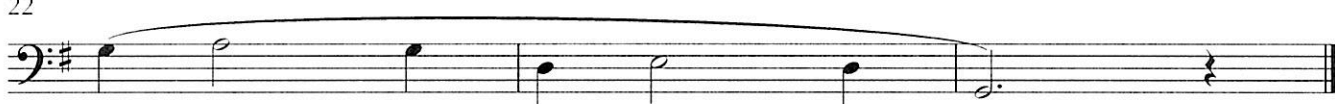
16



19



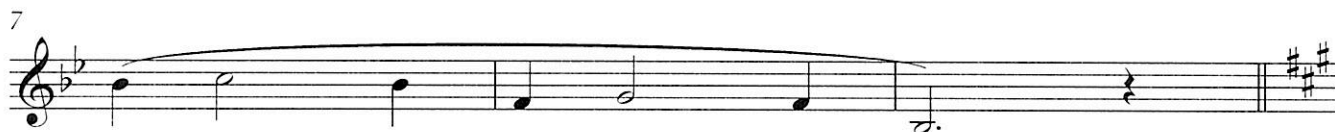
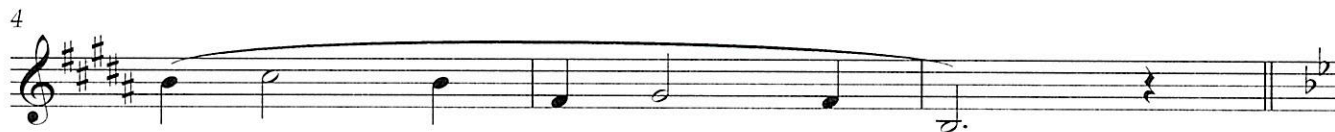
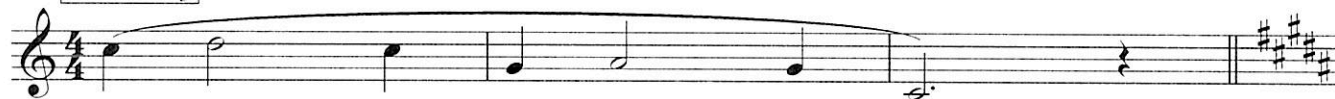
22



Clarinet

Stamp Flow Study #1

Flow Study



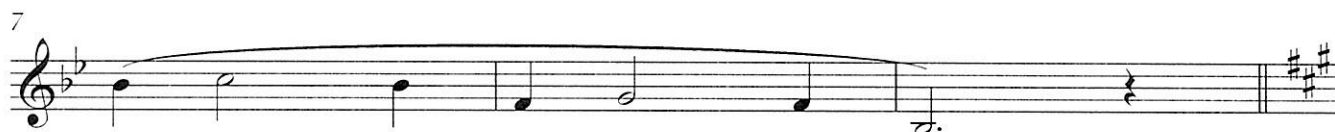
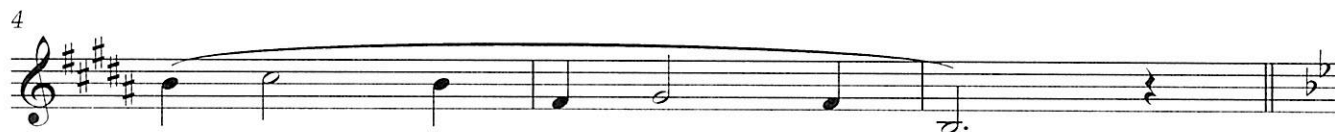
Flow Study - Variation #1



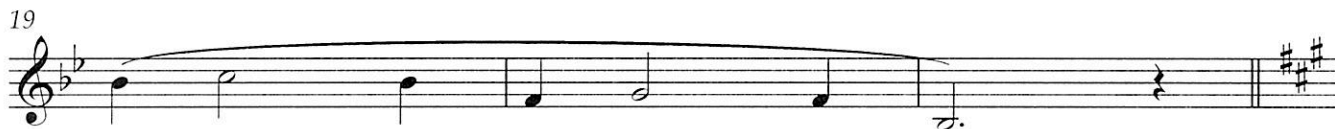
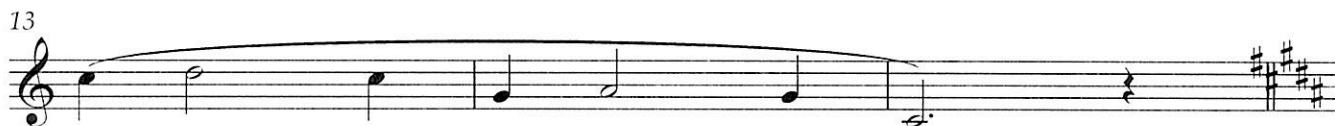
Bass Clarinet

Stamp Flow Study #1

Flow Study



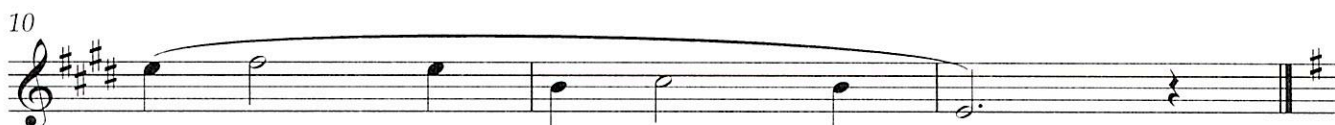
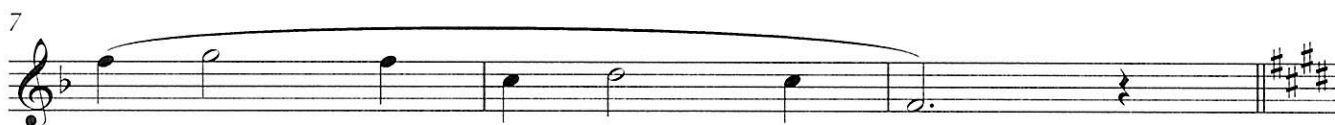
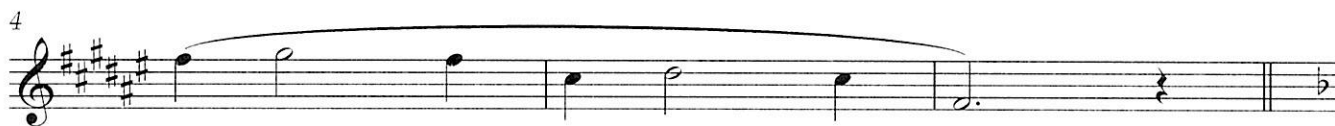
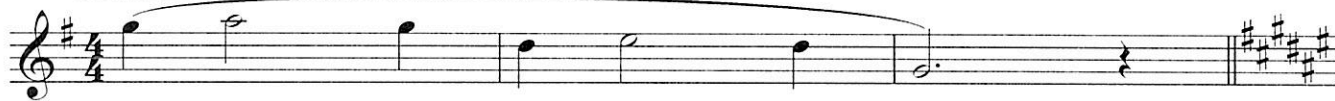
Flow Study - Variation #1



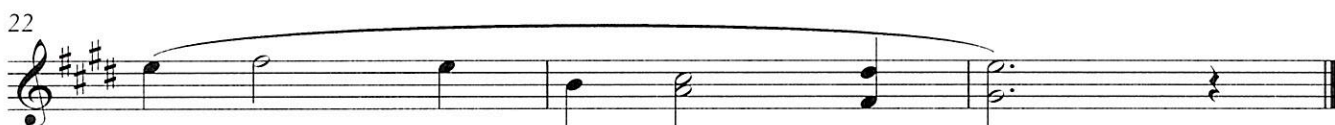
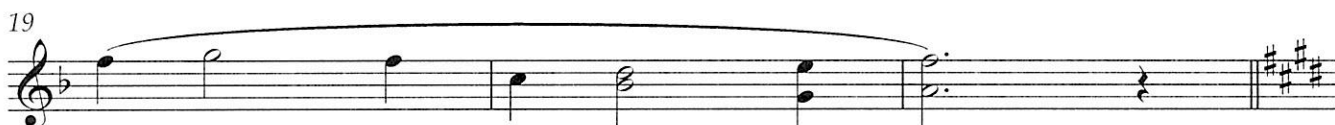
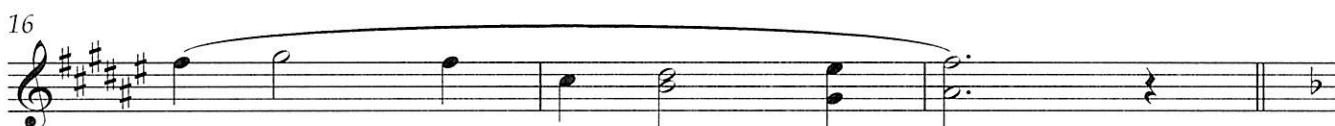
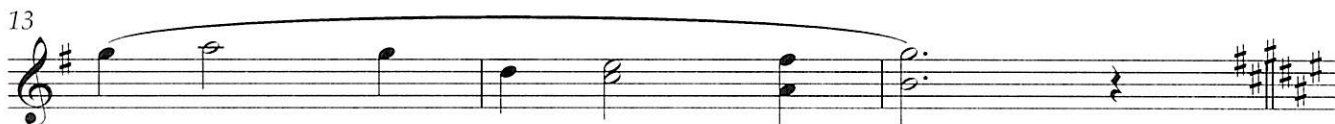
Alto Sax

Stamp Flow Study #1

Flow Study



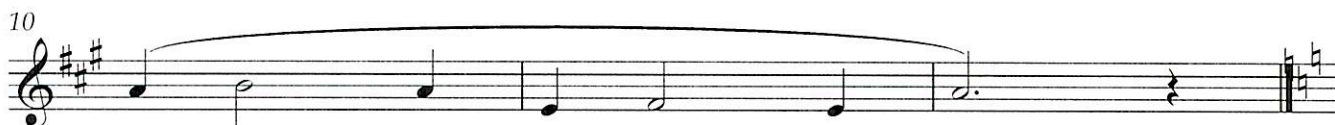
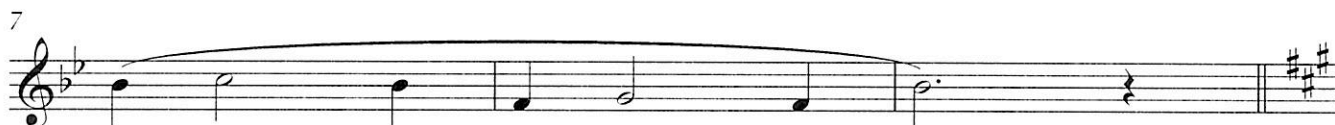
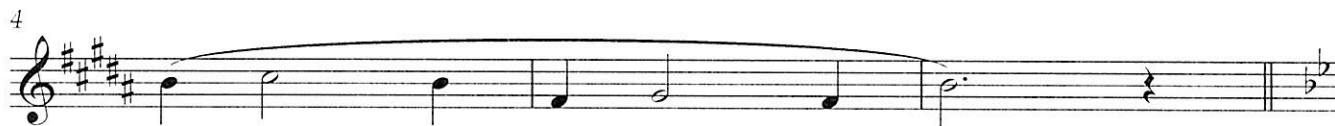
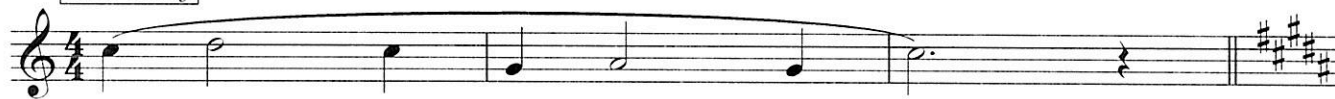
Flow Study - Variation #1



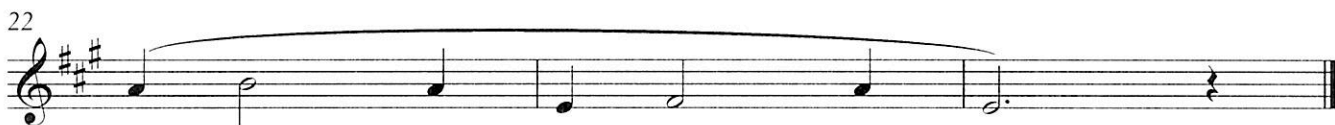
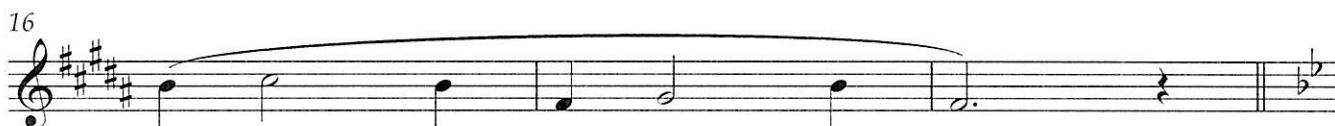
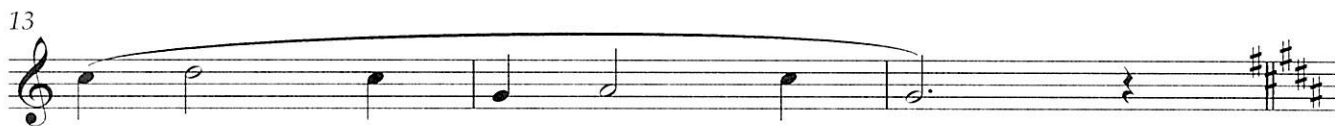
Tenor Sax

Stamp Flow Study #1

Flow Study



Flow Study - Variation #1



Bari Sax

Stamp Flow Study #1

Flow Study

4

7

10

Flow Study - Variation #1

13

16

19

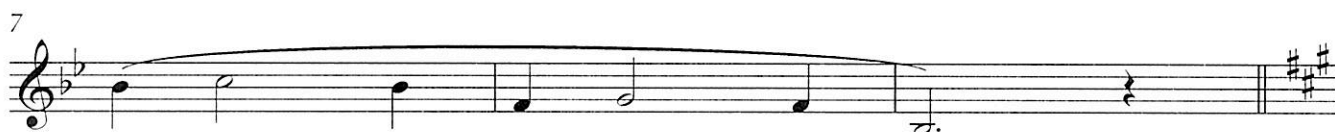
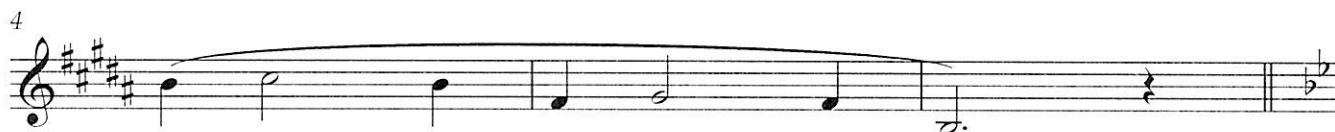
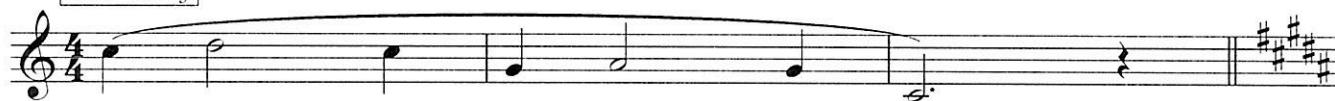
22

Detailed description: This block contains the musical notation for the first 22 measures of 'Stamp Flow Study #1' for Bari Sax. The notation is written on a single staff in treble clef with a 4/4 time signature. Measures 1-12 are grouped under the title 'Flow Study'. Measures 13-22 are grouped under the title 'Flow Study - Variation #1'. The key signature changes from one sharp (F#) in measures 1-10 to two sharps (F# and C#) in measures 11-22. Each measure contains a single note, mostly half notes, with a long slur spanning from the first note of each section to the last. Measure numbers 4, 7, 10, 13, 16, 19, and 22 are placed at the beginning of their respective lines. The notation ends with a double bar line at measure 22.

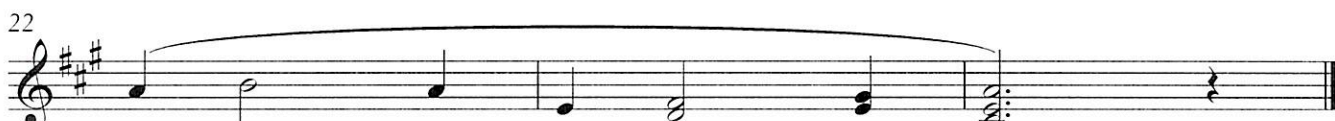
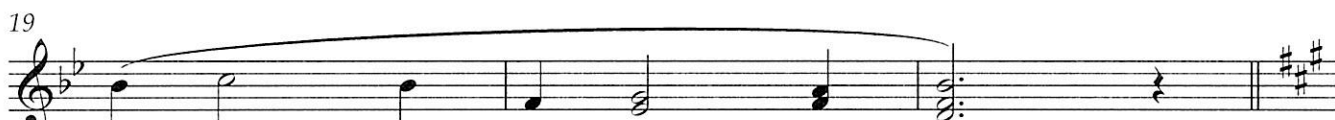
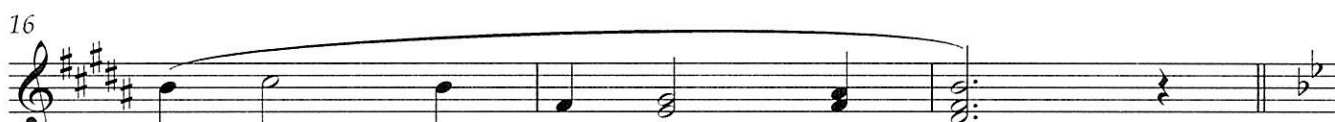
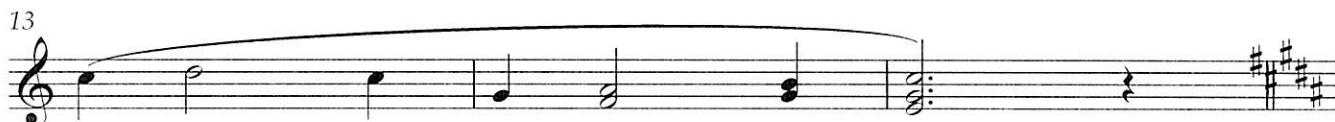
Trumpet

Stamp Flow Study #1

Flow Study



Flow Study - Variation #1

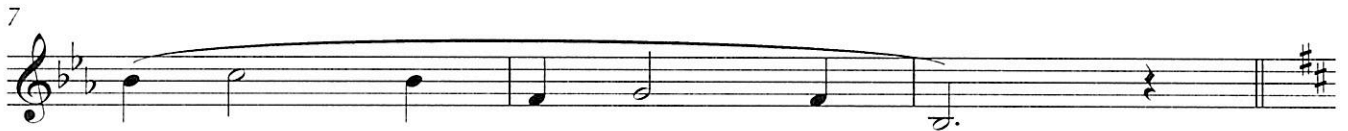
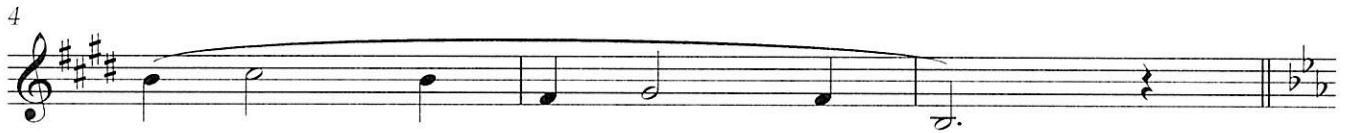
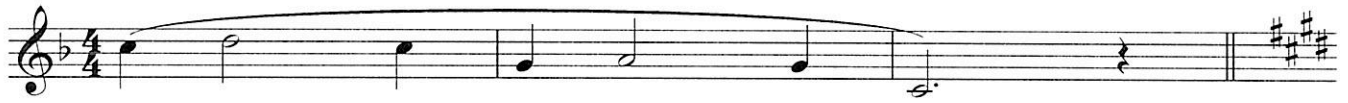


Horn

Stamp Flow Study #1

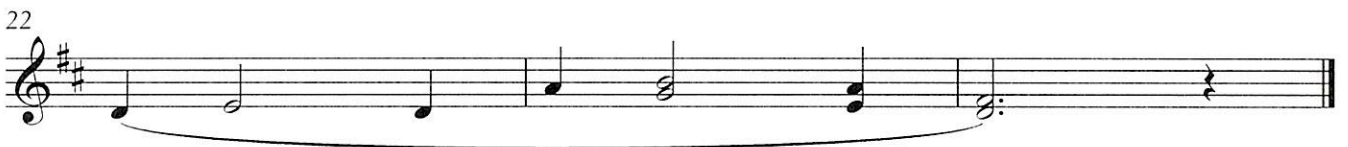
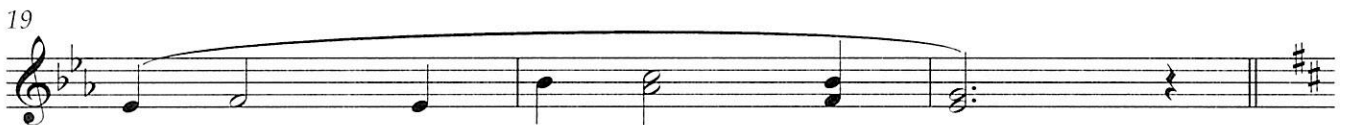
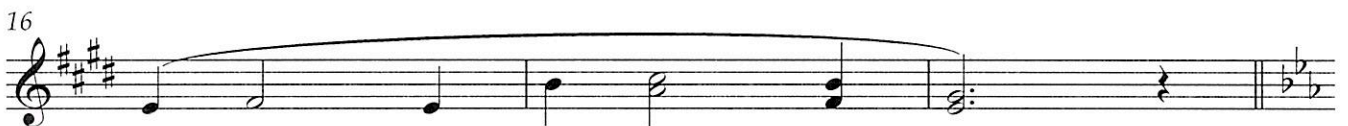
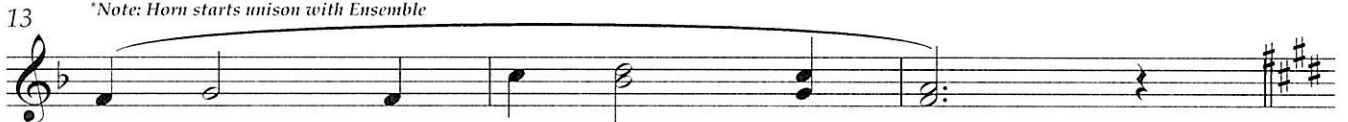
Flow Study

*Note: Horn not in unison with Ensemble



Flow Study - Variation #1

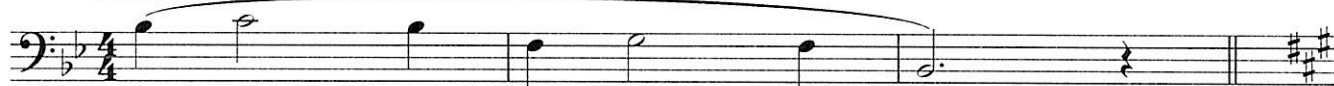
*Note: Horn starts in unison with Ensemble



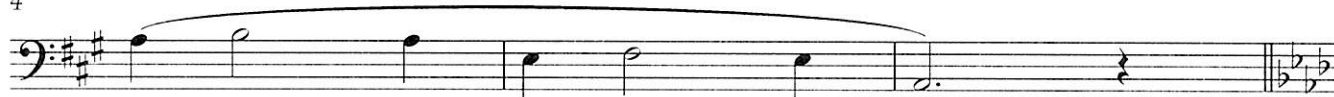
Trombone

Stamp Flow Study #1

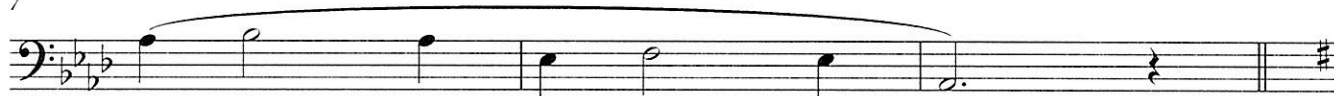
Flow Study



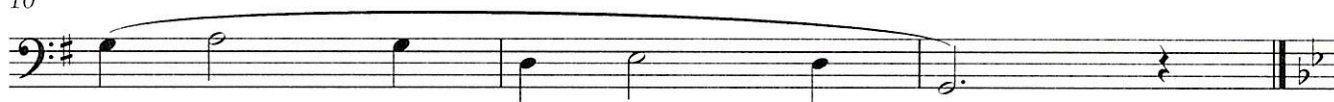
4



7

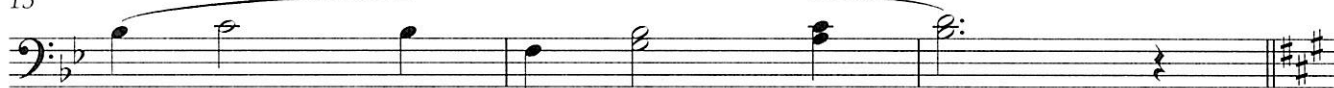


10

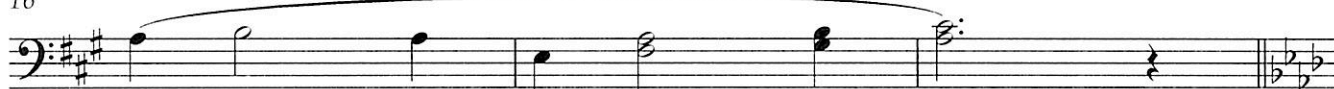


Flow Study - Variation #1

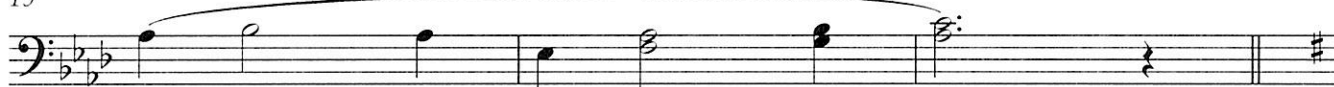
13



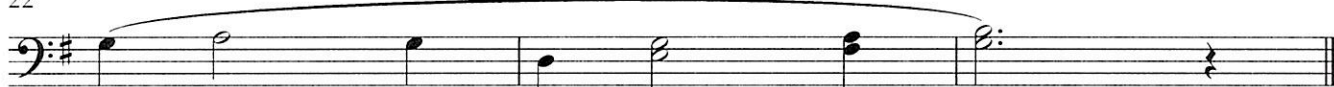
16



19



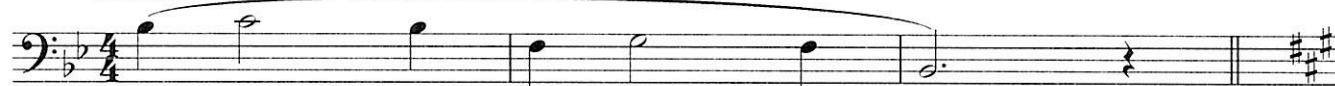
22



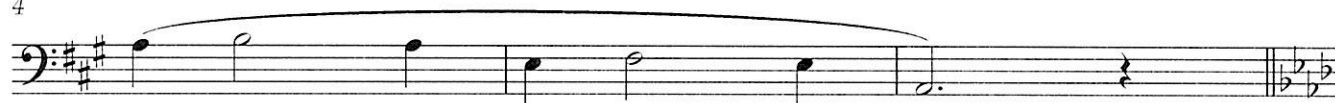
Euphonium

Stamp Flow Study #1

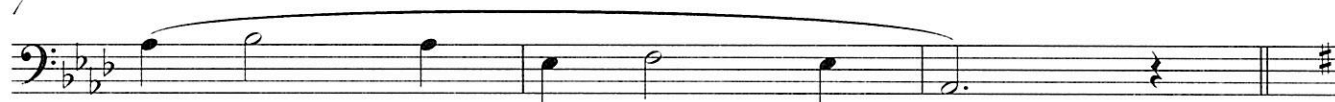
Flow Study



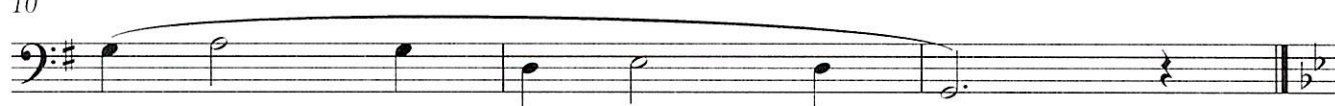
4



7

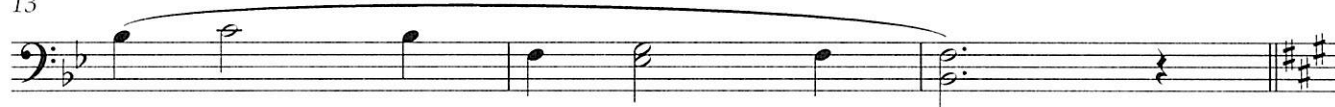


10

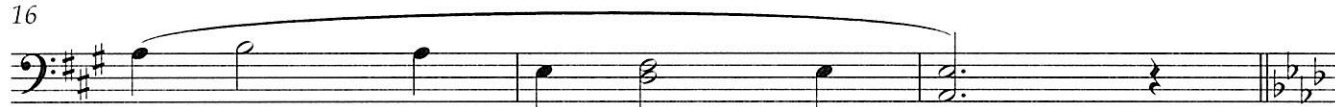


Flow Study - Variation #1

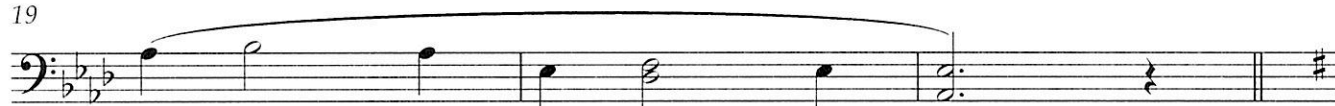
13



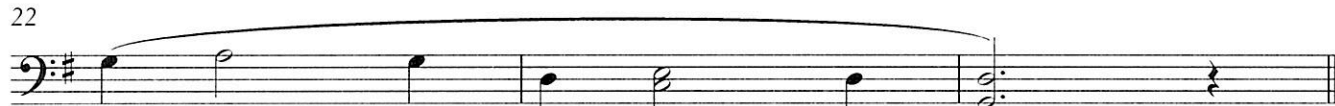
16



19



22



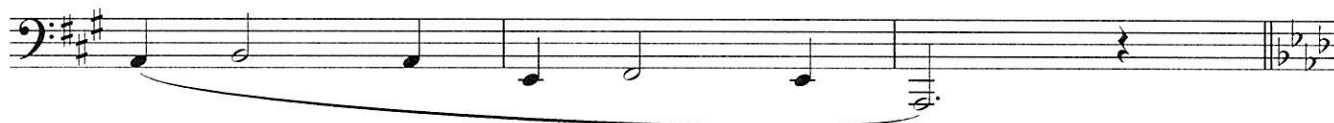
Tuba

Stamp Flow Study #1

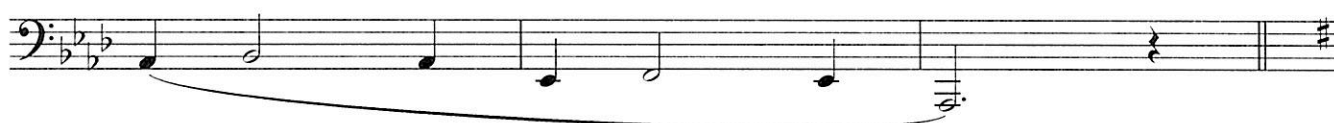
Flow Study



4



7

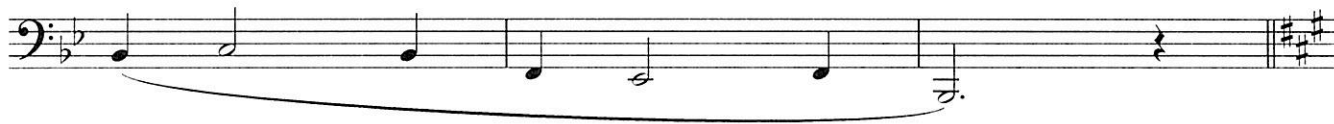


10



Flow Study - Variation #1

13



16



19



22



Snare Drum

Stamp Flow Study #1

Flow Study

Right Hand Lead

4/4

R L R L R R L R L L R L R L R L R R L R L L R L R L R L R R L R L L R L R

4 Left Hand Lead

L R L R L L R L R R L R L R L R L L R L R R L R L R L L R L R R L R L

7 Right Hand Lead

R L R L R R L R L L R L R L R L R R L R L L R L R L R L R R L R L L R L R

10 Left Hand Lead

L R L R L L R L R R L R L R L R L L R L R R L R L R L L R L R R L R L

Flow Study - Variation #1

13

R L R L R R L R L L R L R L R L R R L R L L R L R L R L R R L R L L R L R

16

R L R L R R L R L L R L R L R L R R L R L L R L R L R L R R L R L L R L R

19

R L R L R R L R L L R L R L R L R R L R L L R L R L R L R R L R L L R L R

22

R L R L R R L R L L R L R L R L R R L R L L R L R L R L R R L R L L R L R